

## **Wear appropriate clothing!**

- Safety glasses
- Protective gloves
- Lab coat
- Closed toed shoes (no sandals!)

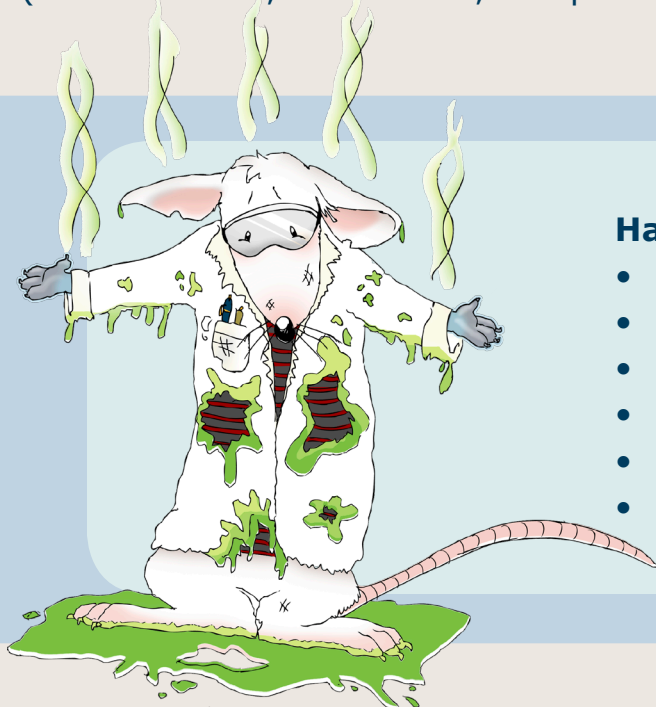
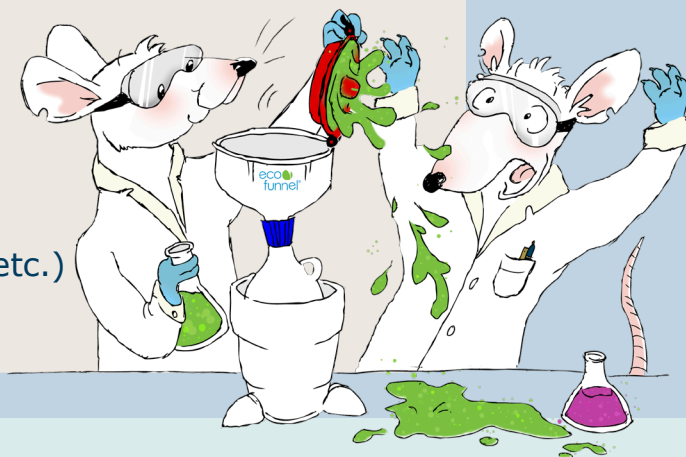
## **Don't wear jewelry or loose articles**

- Tie long hair back
- Do not wear neckties or scarves
- Remove rings, dangling earrings and necklaces

## **Know the Rules and Follow Safety Procedures**

Locate the following before you start:

- Eye Wash station
- Safety Shower
- First Aid Kit
- Fire Extinguisher
- Emergency Phone Numbers  
(Poison Control, Fire Station, Campus Police, etc.)



## **Handle Chemicals Safely**

- Read labels
- Identify chemical hazards
- Protect your eyes, skin and lungs
- Segregate contaminated waste
- Handle glassware carefully
- Keep chemicals in secondary containers

## **Understand the Risks**

- Bunsen burner sparks and flames can ignite chemical fumes
- Keep waste containers closed
- Never taste anything! Keep food out of the lab
- Hot glassware requires special handling
- Never work alone

## **Be Tidy**

- Don't leave containers on the floor
- Avoid obstructing walkways
- Report broken glass
- Clean up after yourself

